

Hardware Catalog

Standard and custom hardware manufacturer per your need

An ISO 9001:2015 Manufacturing Company



1. Hinges

We manufacture all type of standard and custom hinges per requirement

- **Steel**

Most common material, durable and strong.

- **Stainless Steel**

Corrosion-resistant, ideal for outdoor or high-humidity areas.

- **Brass**

Attractive and corrosion-resistant, often used for decorative purposes.

- **Bronze**

Durable and corrosion-resistant, with an antique appearance.

- **Aluminum**

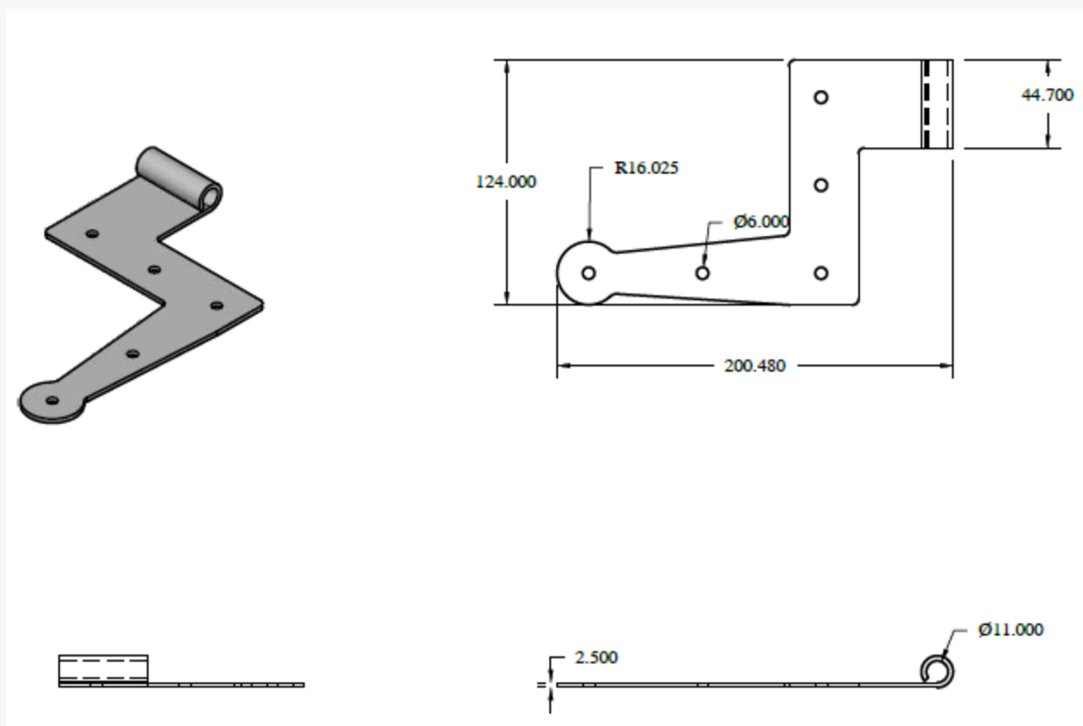
Lightweight and corrosion-resistant, used in lightweight doors or where weight is a concern.

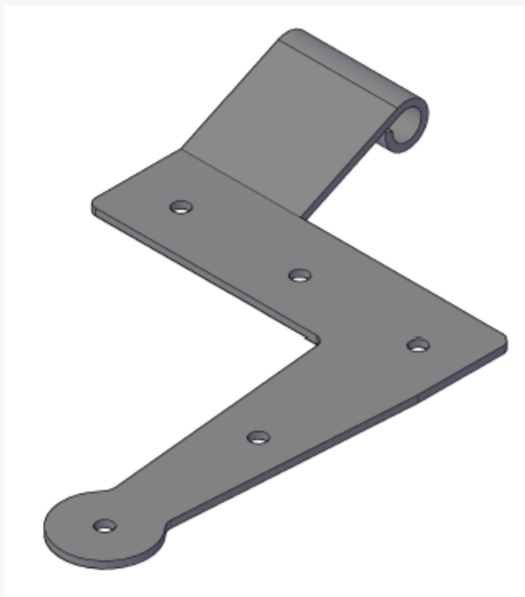
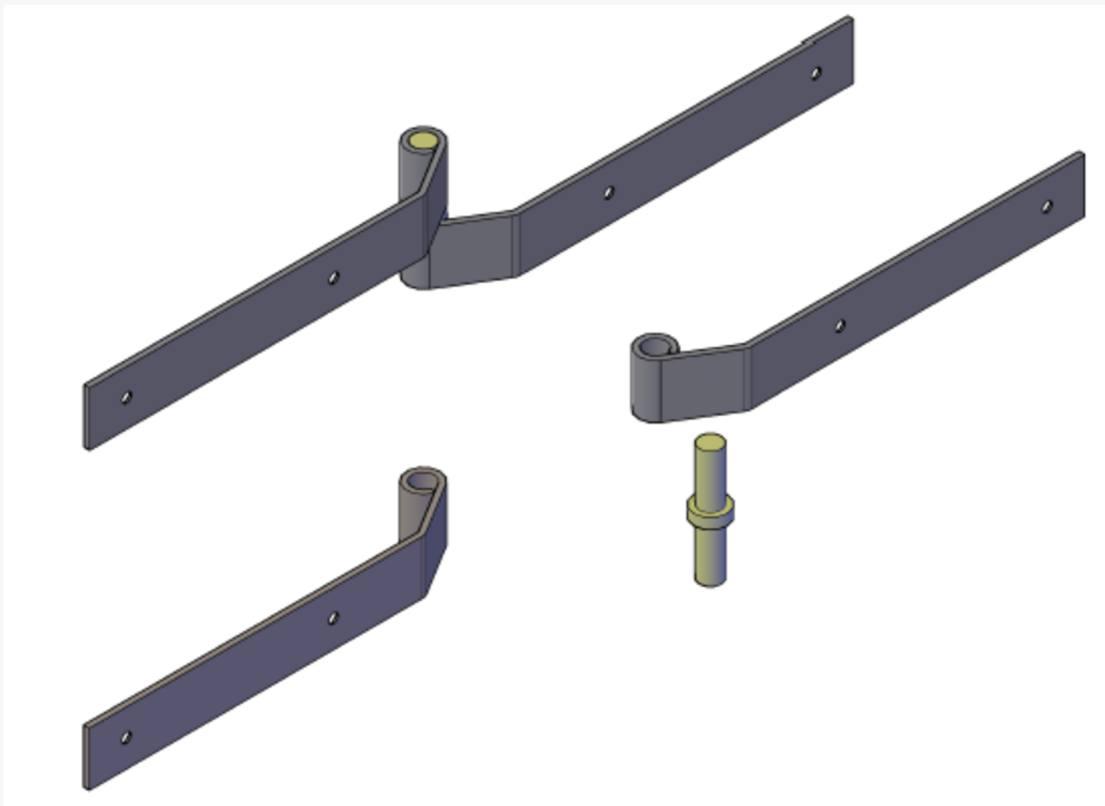
- **Zinc**

Cost-effective, often used in low-cost hinges.

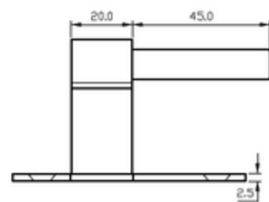
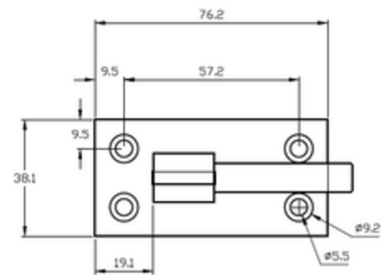
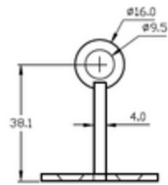
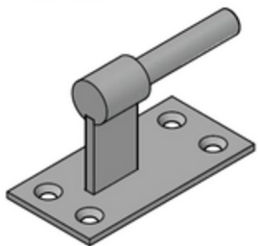
- **Iron**

Traditional material, often used in rustic or antique-style hinges.





1.5" offset rect. base pintel
Material - SS -304



2. Support bracket



Engineered for Strength: Crafted from robust materials like steel, stainless steel, and aluminum, our brackets provide unwavering support.

Tailored to Your Needs: Choose from a variety of finishes including powder coating, electroplating, and hot-dip galvanizing to match your aesthetic and environmental requirements.

Built to Last: Our coatings offer superior corrosion resistance, ensuring your brackets maintain their integrity and performance for years to come.

Customization at Your Fingertips: We can tailor material selection and coating options to meet the specific demands of your project, guaranteeing optimal results.

3. Plate pintle



Engineered for Strength: Crafted from robust materials like steel, stainless steel

Tailored to Your Needs: Choose from a variety of finishes including powder coating, electroplating, and hot-dip galvanizing to match your aesthetic and environmental requirements.

Built to Last: Our coatings offer superior corrosion resistance, ensuring your plate maintain their integrity and performance for years to come.

Customization at Your Fingertips: We can tailor material selection and coating options to meet the specific demands of your project, guaranteeing optimal results.

4. Lag hold back-S



Engineered for Strength: Crafted from robust materials like steel, stainless steel

Tailored to Your Needs: Choose from a variety of finishes including powder coating, electroplating, and hot-dip galvanizing to match your aesthetic and environmental requirements.

Built to Last: Our coatings offer superior corrosion resistance, ensuring your plate maintain their integrity and performance for years to come.

Customization at Your Fingertips: We can tailor material selection and coating options to meet the specific demands of your project, guaranteeing optimal results.

5. Locking slide bolt



6. SS Bullet catch



7. Cane bolt



Material:

Stainless Steel

Brass

Bronze

Powder coated

Fully custom made

8. Copper cap

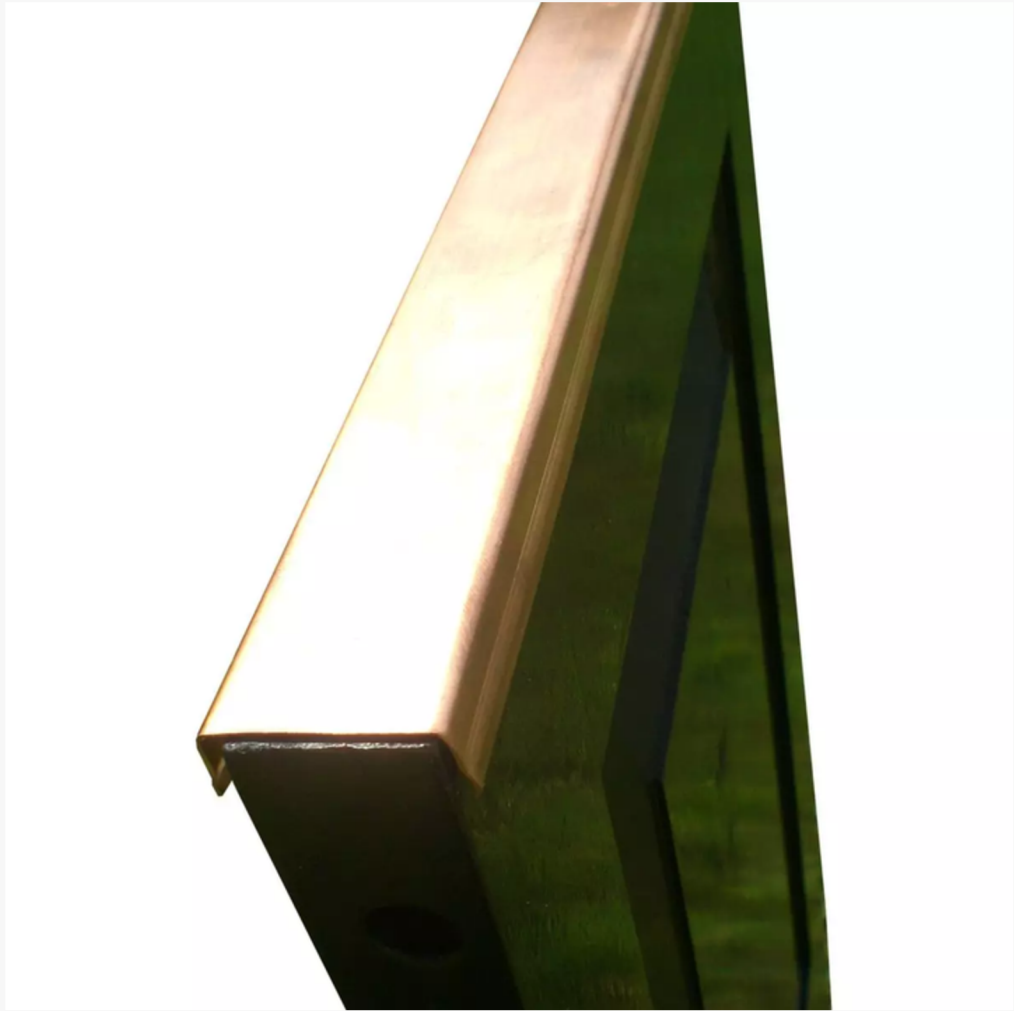


Photo from shopfloor

