

**WOOD POLYMER
COMPOSITE MATERIAL**



We have only
 *one earth,*
Please save and protect the
forest resources.



"Shubhwood is the only India company
whose WPC products are certified as
GREEN PRODUCT by IGBC - CII"



ISO 9001:2008



ISO 14001:2004



Shubhwood Premium Composites
are the modern alternative
to tropical hardwood



Shubh Wood is young dynamic company in the emerging field of manufacturing wood composite panels. We have developed a sound and spacious infrastructure at Morbi, Gujarat (India), supported by which we are able to carry out the production process of offered wood plastic composite panels

Leveraging on the support of our dexterous workforce, we are able to manufacture and supply high class Wood Plastic Composite Panels. Customers sprawled across the nations widely appreciate the offered wood plastic composite panels as these are made using high grade raw material. Moreover, we make use of modern machinery in the manufacturing process of these wood plastic composite panels so as to ensure their fine finish.

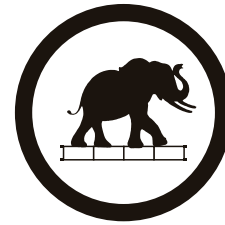
We believe in our people, their strength and we believe in giving sky for their growth. With an absolute dedication of developing cluster based production systems for 'Wood plastic composites', we are continuously working on several application development for wood and furniture industry from WPC. We have successfully developed WPC Decking, WPC Wall Cladding, WPC pergola, WPC gazebo, WPC railing, WPC benches, WPC louvers and many other products.



Low Maintenance



Eco-Friendly



Durable



Resistance To
Insects



Easy
Installation



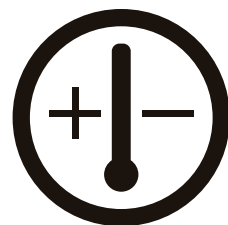
Non Slip
Surface



Non
Flamable



Water
Resistance



Temperatures
Resistance



Resistance to Fungi
And Bacteria



High UV
Resistance

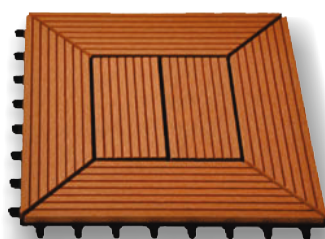




Profile Code : SW-2003
Dimension : 300mm x 300mm
Standard Thickness : 20mm
Standard Color : Wenge, Walnut
Special Color : Red, Black, Teak, Beach White
Surface Finishes : Brushing



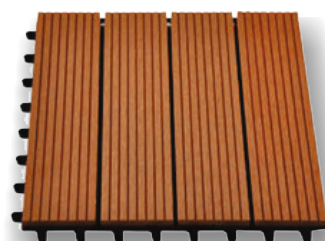
Profile Code : SW-2005
Dimension : 300mm x 300mm
Standard Thickness : 20mm
Standard Color : Wenge, Walnut
Special Color : Red, Black, Teak, Beach White
Surface Finishes : Brushing



Profile Code : SW-2004
Dimension : 300mm x 300mm
Standard Thickness : 20mm
Standard Color : Wenge, Walnut
Special Color : Red, Black, Teak, Beach White
Surface Finishes : Brushing



Profile Code : SW-2002
Dimension : 300mm x 300mm
Standard Thickness : 20mm
Standard Color : Wenge, Walnut
Special Color : Red, Black, Teak, Beach White
Surface Finishes : Brushing



Profile Code : SW-2001
Dimension : 300mm x 300mm
Standard Thickness : 20mm
Standard Color : Wenge, Walnut
Special Color : Red, Black, Teak, Beach White
Surface Finishes : Brushing







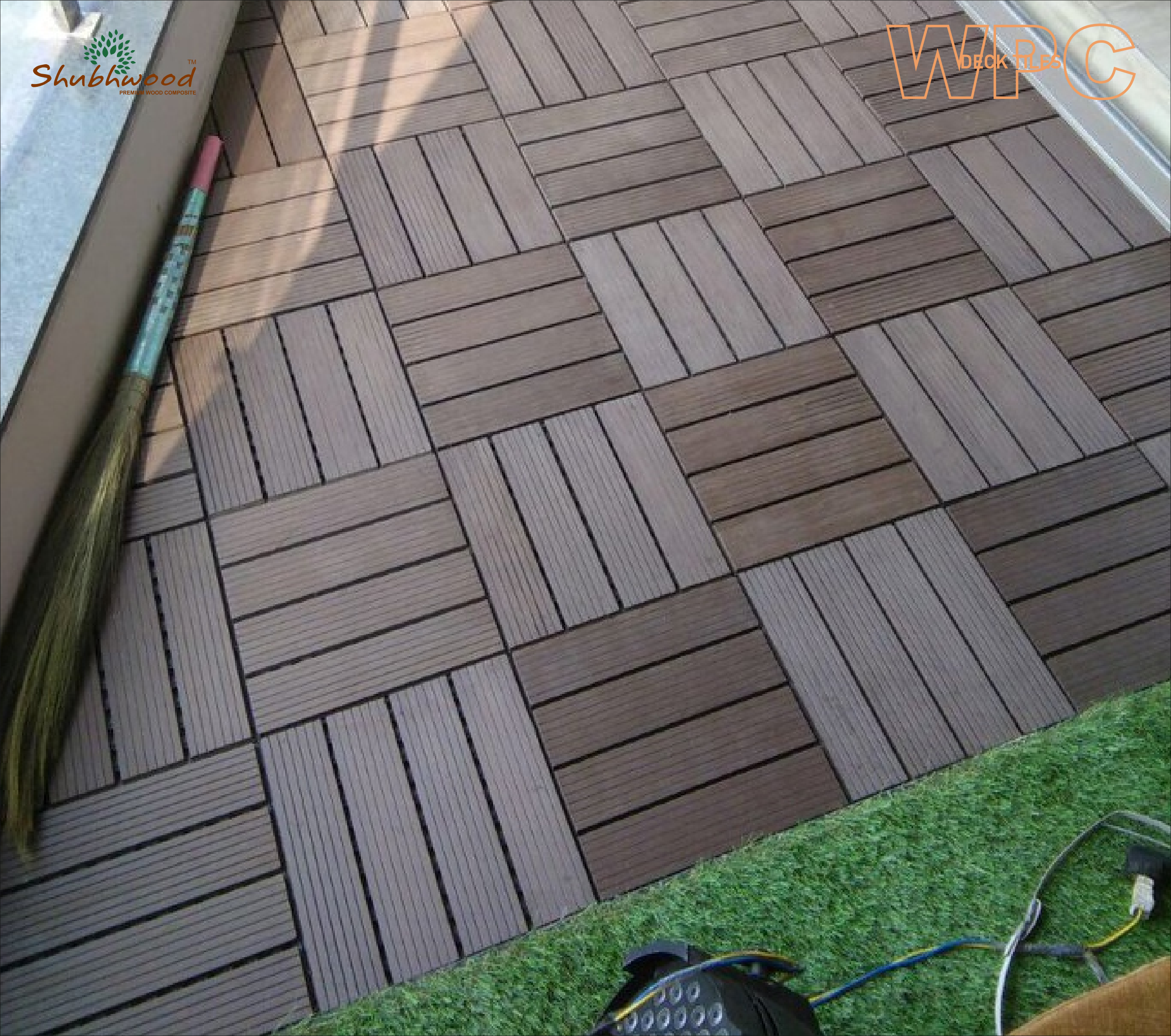




















COLOR CHART

STANDARD COLOR



Wenge



Walnut

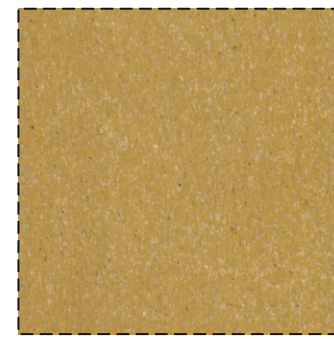
SPECIAL COLOR



Red



Black



Teak



Beach White

*Note: 5% to 7% color variation is common in this product, because of waste wood.

SURFACES



Wooden Effect 1



Wooden Effect 2



Brushing

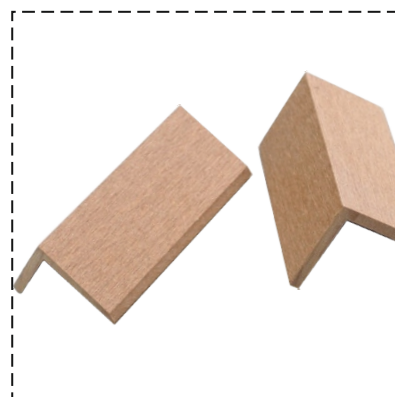


Sanding

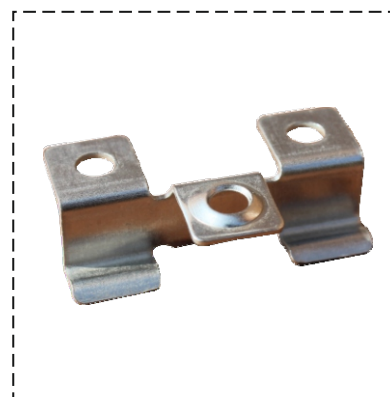
ACCESSORIES



Flooring Joist



L Shape End Cap



Clamp



PVC Clamp



Shubh Composites

Shubh Wood Experience Centre: 418, ankur marble gali, Gota, ahmedabad, Gujarat - 382481
Factory Address: Survey No. 570, Opp. Sona Ceramic, Old Ghuntu Road, Morbi, Gujarat. India.
E-mail: info@shubhwood.com, shubhwood@gmail.com, Web: www.shubhwood.com
Mob.: 075678 07567, Tel: +91 2822 240617. Fax: +91 2822 240618

